

Wharton Center for Performing Arts

Technical Information

for the COBB

Great Hall

Version current as of September 2019
Michigan State University, East Lansing MI

General Information

MAILING:

Wharton Center for Performing Arts
750 E. Shaw Lane
Michigan State University
East Lansing, Michigan 48824-1318
Home Page - <http://www.whartoncenter.com>

GPS Directions to Stage Door/Loading Docks **ONLY**

755 Wilson Road
Michigan State University
East Lansing, Michigan 48824-1318

TIME ZONE - Eastern Standard Time
Seating Capacity: 2,254

Administrative Personnel

Administrative Offices	(517) 353-1982
FAX #	(517) 353-5329
Ticket Office	(517) 432-2000 1-800-WHARTON
Backstage	(517) 355-1907

Eric Olmscheid	Executive Director	(517) 884-3111	eric@whartoncenter.com
Jarrod Bradford	Director of Operations	(517) 884-3104	bradfo64@msu.edu
Kandra Harper	Booking & Event Coordinator	(517) 884-2375	harper43@msu.edu
Cody Manthei	Catering & Artist Hospitality Manager	(517) 884-2374	mantheic@msu.edu
Lisa Brinker	Director of Marketing & Communications	(517) 884-3132	brinkerl@msu.edu
Doug Mactaggart	Director of Finance	(517) 884-3123	mactagg1@msu.edu
Bert Goldstein	Director MSU FCU Institute for Arts and Creativity	(517) 884-3108	goldst72@msu.edu
Jennifer Richard	Ticket Office Manager	(517) 884-3106	richa560@msu.edu
Matt Kribs	House Manager	(517) 884-3199	kribsma@msu.edu
Bob Hoffman	Public Relations Manager	(517) 884-3115	hoffma95@msu.edu
Ryonn Clute	Senior Marketing Manager	(517) 884-3117	cluteryo@msu.edu
Tara Peplowski	Marketing & Group Sales Manager	(517) 884-3148	tarapep@whartoncenter.com

Production Personnel

Sandy Thomley	Senior Production Manager	(517) 884-3109	thomley@msu.edu
Maureen Murphy	Facility Stage Manager	(517) 884-3163	murphym3@msu.edu
Steve Heinrich	Facility Stage Manager	(517) 884-3110	Heinrich@msu.edu
Dave Barnum	Facility Stage Manager	(517) 884-3173	barnumd@msu.edu

I.A.T.S.E. Local 274

419 S. Washington Square, Lansing , MI 48933-2124
Office: (517) 374-5570 Fax: (517) 374-5589

Specifications

Loading Dock

Dock Height is 3' 7" and is level with stage floor.

There is enough space for 4 trucks/trailers at the dock.

Coordinate with Wharton Production Manager for vehicles to remain parked at the loading dock.

Loading door dimensions are 9' 10" H x 9' 10" W .

Stage *The Great Hall has a double curve DS edge of the stage (see stage diagram)*

Orchestra Lifts *There are two orchestra lifts (serepid rigid chain) which work independently of each other*

Inner Lift (504 sq.ft.) 52' 0" x 11' 8"

Outer Lift (880 sq.ft.) 70' 9" x 10' 9"

Coordinate with Wharton Production Manager the event's needs as it relates to stage lift set-up.

Inner lift can play at stage height creating large stage apron or it can be used as a traditional orchestra pit.

Outer lift can play at stage height, along with inner lift creating a very large stage apron, or it can be used as additional orchestra level seating, adding an additional three rows of seats, or it can be used in conjunction with inner lift, below stage height for a very large orchestra pit.

If outer lift orchestra seating is used it adds, three rows totaling 119 seats on wagons. (Rows: AA, BB, CC)

If outer lift seating is not used, these rows roll off into a lower storage area. (Rows: AA, BB, CC)

Maximum depth of both lifts is 11' below stage level (an access door is at each level).

Lifts cannot be operated during performances!

Stage Right Platform (Jump)

There is a 12'w x 56'L steel platform, 27' above the SR wing space.

Platform has a pin-rail built in.

Distance from platform to SL pin-rail is 96' clear span SR to SL, stage deck to grid.

Stage Dimensions

Proscenium width	57' 8"
Proscenium Height	30' 0"
Proscenium thickness	2' 4"
Stage Width : SL locking rail to SR patch panel	107' 8"
Wing Space : SR (prosc. to elect. patch panel)	24' 4"
SL (prosc. to locking rail)	25' 8"
Stage Width : SR (center line to SR patch panel)	53' 2"
SL (center line to SL locking rail)	54' 6"
Stage Depth : DS edge of apron to back wall (US)	56' 8"
DS edge of inner orch. lift to back wall	68' 4"
DS edge of outer orch. lift to back wall	79' 1"
US edge of Proscenium (Plasterline) to back wall	52' 0"
House curtain to back wall	50' 0"
House Curtain to apron at CL	4' 6"
House curtain to DS edge of inner lift	16' 9"
House curtain to DS edge of outer lift	27' 6"
US edge of prosc. to apron at CL	4' 5"
US edge of prosc.to DS edge inner lift	16' 2"
US edge of prosc.to DS edge outer lift	26' 11"
Circular width front edge of inner lift	56' 10"
Circular width front edge of outer lift	82' 9"

Rigging

General Information

Counterweight system is single purchase 1:1 ratio

Grid is 75' 10" above stage floor

Locking Rails (both floor and upper pin-rail levels) are stage left with vertical clearance 13' 10"

- Batten length is 68'0" except for line sets 1, 2 which are 84'0"
- Batten travel is 69' 2"
- Batten low trim is 3' 10"
- Batten high trim is 73' 0"

Average distance between battens is 8" oc

Batten is 1½" ID schedule 40 pipe

Batten has 7 lift lines (except 1, 2 which have 9)

Pipe weight is 175 lb.

Arbor capacities: general batten 1500 lb. electric batten 2000 lb.

Orchestra Shell Ceiling

See hanging plot

Ceiling pieces can be cleared from line-sets; coordinate with Wharton Center Production Manager

Main Act Curtain line-set #2

Manual guillotine or manual travel (split center)

Main Act Curtain cannot be stripped.

Valance line-set #1

Valance is part of Deluge Fire Protection System

NO scenery, lights, etc. may be attached to batten

NO scenery or equipment may be placed across curtain line which would prevent valance from reaching stage floor

Valance is not a "working" batten. Valance cannot be stripped.

DRAPES

<u>Item</u>	<u>Color</u>	<u>Material</u>	<u>Fullness</u>
Valance	Green	velour	100%
Main curtain	Green	velour	100%
Legs	black	velour	60%
Borders	black	velour	60%
Travelers	black	velour	60%
Cyclorama	blue	muslin	0%

Stage Deck

Stage Floor construction, from bottom to top is as follows:

2x4 wood sleepers on 2' centers resting on neoprene pads

¾" plywood

1" plywood (laid at right angles to ¾" plywood)

1 1/8" T&G maple flooring

Stage Floor is stained brown and sealed.

Nails, screws, lag bolts, etc. may be used in the floor.

**All support areas and equipment are shared between Pasant Theatre and Great Hall.
Please check with Wharton Production Manager regarding availability for your specific event.**

DRESSING ROOMS & SUPPORT ROOMS (floor plans at end of rider)

<u>Rm #</u>	<u>Capacity</u>	<u>Location</u>	<u>NOTES</u>
157	1	1 ST Floor	Closest to stage. Suite style, private bath, w/shower & make-up counter
156	1	1 ST Floor	Directly across from 157. Suite style, private bath, w/shower & make-up counter
257	3	2 nd Floor	Share walk-thru bathroom & shower w/ rm. 259
259	3	2 nd Floor	Share walk-thru bathroom & shower w/ rm. 257
256	14	2 nd Floor	Chorus Room
261	3	2 nd Floor	Share walk-thru bathroom & shower w/ rm. 263
263	3	2 nd Floor	Share walk-thru bathroom & shower w/ rm. 261
260	—	2 nd floor	Touring B'Way shows: hair room. Has private bath, deep sink, no shower.
265	3	2 nd Floor	Private bath & shower
262	4	2 nd Floor	Private bathroom, but no shower
267	3	2 nd Floor	Private bathroom & shower. B'way tours Stg. Mng. office
269	3	2 nd Floor	Private bathroom & shower. B'way tours Stg. Mng. office
264	20	2 nd Floor	Chorus Room (close to 2 nd freight elevator/small loading dock)
271	3	2 nd Floor	<i>Check availability, often assigned to other stage.</i>
272	3	2 nd Floor	<i>Check availability, often assigned to other stage.</i>
274	3	2 nd Floor	<i>Check availability, often assigned to other stage.</i>
270	—	2 nd Floor	B'Way Tours: often use as Company Mng. or Phys. therapy. No counters, no bath.
266	—	2 nd Floor	B'Way tours, wardrobe room & laundry (close to 2 nd freight elevator/small loading dock)
382	21	3 rd Floor	<i>Furthest from Great Hall stage; Check availability, often assigned to other stage.</i>

All dressing rooms are equipped with make-up counter, mirrors w\lights, sink, toilet(s), and showers (except where noted above)

Second and third floor rooms are accessible by elevator or stairs

Laundry Room

Wharton Center has two Laundry Rooms.

Coordinate with the Wharton Production Manager for use of either laundry room.

Three heavy duty washers and three heavy duty dryers provided in each laundry room

Two steam irons and ironing board

Two Jiffy steamers with wand

One deep tub sink

Ten 6' long rolling costume racks

Rehearsal Studio

(separate rental space - located on third floor)

Coordinate your event needs with Wharton Production Manager

34' 6" wide x 68' 4" long

68' of mirrors (6' tall) along west wall

Hardwood floor (same construction as Great Hall stage floor)

Covered with gray Marley dance floor.

Accessible by elevator or stairs

Electrical

Company Switches

Located USR next to stage entrance:

#1 Hook-up: 120/208 VAC, 3 phase, 5 wire, 600A/leg

#2 Hook-up : 120/208 VAC, 3 phase, 5 wire, 200A/leg:

Fused in three separate boxes at ; 200A/leg, or: 100A/leg , or 60A/leg.

#3 Hook-up : 120/208 VAC, 3 phase, 5 wire: This is a 800 amp/leg maximum combination load Distribution box

Located USR on back wall.

There are six (6) - 3-phase Breakers : 2 - 400A, 2 - 200A, 2 - 100A

Female Cam-lock connectors on the 400A & 200A breakers

Dimmers

4 ETC Sensor AF dimmer racks: 319 - 2.4 kW circuits (dimmer per circuit)

Lighting Control

(1) ETC Expression 2X Console w/ remote focus unit or (1) ETC Insight 2X Console

Located in an enclosed booth at rear of the house

House light control - ETC Snapshot

Clear-Com communication and performance monitor in booth

Circuits : TOTAL: 319) 20A permanently wired house circuits

Stage Electric circuits:

1st - 36 , 2nd - 24, 3rd - 24, 4th - 24, 5th (Cyc lights) 6 open circuits

Drop Box circuits 36 total - 18 per side (DS, MS,& US)

FOH circuits:

Second Catwalk 48- 20A circuits

First Catwalk 28- 20A "

SR Box Boom 18- 20A "

SL Box Boom 18- 20A "

ALL FOH circuits break out at transfer panel USR

FOH positions

Throws from Second Catwalk, SR & SL Box Booms average 67 - 77'

Throws from First Catwalk average 35'

House Light Plot

The Great Hall normal house FOH hang as listed below

#2 Catwalk 45) 19° 24) 10° ETC S-4

Box Booms one SL one SR; in each: 12) 19° ETC S-4 1) 26° ETC S-4 (Curtain Warmers)

Electric Miscellaneous

(shared with Pasant Theatre- check availability)

(40) 20amp stage pin two-fers

(10) 24' diameter boom bases, threaded for 1½" pipe

An assortment of 1½" pipe in various lengths

(8) 14" diameter boom bases, threaded for 1" pipe

(2) rolling boom bases, threaded for 1" pipe

Lighting

Luminaries

<u>Quantity</u>	<u>Size</u>	<u>Angle</u>	<u>Watt/lamp</u>	<u>Frame size</u>
***72	ETC Source Four	19°	575 HLP	6½" x 6½"
***32	ETC Source Four	10°	575 HLP	12" x 12"
98	ETC Pars	w/ 5 lens	575 HLP	7½" x 7½"
80	ETC Source Four	36°	575 HLP	6½" x 6½"
84	ETC Source Four	26°	575 HLP	6½" x 6½"
	ETC Source Four	10°	ADDITIONAL LENS TUBES	
	ETC Source Four	36°	ADDITIONAL LENS TUBES	
12	6' 9" striplight (1500/ckt)		500 FCZ	11 7/8"x 8 ¾"
*8	6' 9" Cyclight that are permanently hung on line-set #49			

*****69) 19° and 24) 10° units are in FOH Hang**

Follow Spots

- (4) Lycian 1295 lamped at 3K (purchased new February 2016)
Located at rear of the Balcony in an enclosed booth
- (4) separate 30A circuits in booth:
- (2) 120 VAC single phase, 3 wire
- (2) 120 VAC single phase, 3 wire OR 220 VAC single phase, 4 wire

Distance to proscenium at center line is 140'

Accessories

(shared with Pasant Theatre- check availability)

- (24) barn doors for 8" fresnel
- (30) barn doors for ETC Source Four PARS
- (10) drop in Iris's for ETC Source Four leko
- (50) pattern holders for ETC Source Four leko

Front Video Projection location

Located at rear of house /share the sound mix position
Throw from sound bunker is 110' approx. a 7° angle

Audio; The Great Hall is VERY live acoustically; Allow adequate time for sound checks.

NOTE: Michigan State University limits electronic sound pressure levels to a maximum of 105 DB during all events. Your event CANNOT exceed this level at ANY time.

Touring companies may patch into the house system for additional coverage.

Mixing position for ALL shows is at center back of the house, 100' from stage

with unobstructed sightlines to all FOH speakers - **FOH to stage cable run is 300'. To stage right there is a wall mounted gutter, to stage left cable must be run on outside wall and extensively matted.**

To run power to down stage left approximately 200' of feeder is needed. The WC has no in house feeder.

Shore power is available but you need about 175' of cable and both male and female connectors and bare tails to the box.

FOH mixing position size is approx. 19' wide by 13' deep

System has been SIMMED to provide even sound coverage over the whole house.

Front Of House

- Midas Heritage 2000/ 56ch.
- 6 XTA 3rd octave graphs GQ600
- XTA Audio Core computer at FOH
- Tascam CDR
- Tascam Dual CD and TAPE
- Eventide Eclipse Vocal Processor
- TC Electronic M3000
- 8 Comps DBX 1046
- 8 Gates Drawmer DS404
- Snake trough on wall with 56ch. Mic/line and 20ch. Drive

Installed Speakers

- L-Acoustics dVDOSC Centre Line Array/ 14 Cabs
- 2 per side d & b E3 side fills
- 2 per side L-Acoustics Arcs side fills
- 6 d & b E3 Front Fills
- 2 Meyer UPA2P Balcony Fill
- 2 Meyer USW-P Subs in with line array
- 20 Drive lines
- 56 Mic/Line Ch.'s
- XTA DP 224's Loudspeaker Processor For Proscenium Stacks
- Main PA Tie IN
- Program sound and Phonic Ear Tie IN
- 4 12ch. Sub snakes
- Mic/line Manifold
- Drive line Manifold

Amp Racks

- Crown Macro Techs 3600
- d & b EPAC Processor/Amplifiers
- XTA DP226 Processors

Monitor System

- CrestX 48ch. Monitor Desk
- 12 DBX 20 Series 3rd Octive Graphs
- Virtualizer Pro DSP2024P Effects Processor
- 8 Crown MacroTechs 24X6 Amps
- 12 Macpherson M12 Wedges
- Other Monitor gear available if needed

Microphone Inventory: check availability

- | | | |
|-----------------|-------------------------|--------------------------------|
| 4 SM81 | 2 PZM | 7 EV RE11 |
| 4 AKG 414 | 2 Beyer M69 | 2 EV DS35 |
| 3 Crown Pcc 160 | 8 AKG 535 | 3 EV RE10 |
| 4 Senn 421 | 4 Beta 58 | 2 EV CS15E |
| 3 Senn MKH40 | 12 SM 58 | 4 BSS Active DI |
| 1 AKG D12 | 7 Beta 57 | 3 DB1 DI |
| 1 EV RE20 | 3 SM 57 | 1 Countryman TYPE 85 Active DI |
| 3 Senn 431 | 4 Audio Tech Uni-Points | |
| 1 PZM 30D | 3 Audio Tech Angel Mics | |

On stage

Moveable Speaker Stacks

- 2 per side Meyer 650's Proscenium Stacks
- 2 per side Meyer CQ's Proscenium Stacks

Shure Wireless

-12 CH's

-8 Beta 87 Hand Helds

-12 Lav packs U1/UA

-12 Lavs WL50

-2 Senn MKH2

Properties**Equipment** (shared with Pasant Theatre check availability)

- (200) Black orchestra chairs
- (100) Music stands
- (80) Music stand lights
- (8) 3 step choral risers w/ 4th step addition
- (12) 4'x 8'risers 8" high
- (12) 4'x 8'risers 16" high
- (12) 4'x 8'risers 24" high
- (12) 4'x 8'risers 32" high
- (2) conductor podium (gray carpet) w/ 1 railing (1 med. , 1 lg. used separate or stacked for bi-level)
- (2) full height wooden lecterns
- (32) folding leg tables 30"x 70" (black table skirting available)
- (8) folding leg tables 30"x 48"
- (1) JLG personnel lift 36'

an assortment of 4-wheel dollies & 2-wheel carts, rolling clothes racks

Rentals

- (1) 9' Steinway concert grand piano
- (1) 7' Baldwin concert grand piano
- (1) Yamaha U-1 upright piano
- (1) Full stage Wenger Custom Orchestra Shell w/ceiling and lights (must be assembled)
- (8) 6'x 57' sections Marley dance floor (black/gray)
 - Fastfold projection screen 10'x 14' front projection
 - Fastfold projection screen 7'x 9' Rear projection
- (1) Mitsubishi LVP X5000U XGA 3700 lumen LCD projector

Video

The Great Hall has a permanent in-house closed circuit video system w/ color monitors backstage and throughout the lobbies.

It is a single camera system with a fixed position located at the rear of orchestra level.

Wireless Frequencies

Many wireless frequencies are used on campus. Please plan on checking with house audio engineer your wireless frequency needs.

Great Hall Hanging Plot

Proscenium opening = 30'-0" tall x 57'-8" wide

Lineset #	Distance from plasterline	House Goods	Information & Notes	Your show hang plot
1	0'-10"	Grand Valance/Fire Curtain	33'H x 64'W, Cannot be stripped	House: Fire Curtain
2	1'-6'	Grand Traveler	33'H x 74'W, manual fly, or travel	
3	2'-9"	#1 House Electric	36 circuits, dimmer-per-circuit, double batten	
4	4'-2"	Empty		
5	4'-8"	Empty		
6	5'-1"	Empty (#1 Orchestra Shell Ceiling)		
7	6'-1"	Empty		
8	6'-9"	Empty		
9	7'-4"	Empty		
10	8'-1"	Black Border	15'H x 84'W, 300 lbs.	
11	8'-8"	Black Traveler	35'H x 87'W, track = 475, goods = 650 lbs.	
12	9'-4"	Empty		
13	10'-0"	Empty		
14	10'-8"	#2 House Electric	24 circuits, dimmer-per-circuit, double batten	
15	11'-3"	Empty	(well obstruction at approx. 10'-11")	
16	11'-10"	Empty		
17	12'-5"	Empty		
18	13'-1"	Empty		
19	13'-8"	Empty (#2 Orchestra Shell Ceiling)		
20	14'-9"	Empty		
21	15'-4"	Empty		
22	15'-10"	Empty	(well obstruction at approx. 16'-4")	
23	16'-9"	Black Border	12'H x 84'W, 250 lbs.	
24	17'-5"	Black Traveler	35'H x 84'W, track = 475, goods = 650 lbs.	
25	18'-0"	Empty		
26	18'-7"	Empty		
27	19'-3"	#3 House Electric	24 circuits, dimmer-per-circuit, double batten	
28	19'-9"	Empty		
29	20'-5"	Empty	(2" raceway crosses grid at approx. 20'-3")	
30	21'-1"	Empty		
31	21'-7"	Empty	(well obstruction at approx. 21'-8")	
32	22'-4"	Empty (#3 Orchestra Shell Ceiling)		
33	23'-3"	Black Border	12'H x 84'W, 250 lbs.	
34	23'-10"	Black Traveler	35'H x 84'W, track = 475, goods = 650 lbs	
35	24'-5"	Empty		
36	25'-1"	Empty		
37	25'-10"	#4 House Electric	24 circuits, dimmer-per-circuit	
38	26'-6"	Empty	(conduit crosses grid at approx. 27'-0")	
39	27'-5"	Empty		
40	28'-0"	Empty		
41	28'-7"	Empty		
42	29'-3"	Empty		
43	29'-11"	Empty		

44	30'-8"	Black Border	12'H x 84'W, 250 lbs.	
45	31'-5"	Black Traveler	35'H x 84'W, track = 475, goods = 650 lbs.	
46	32'-0"	Empty		
47	32'-7"	Empty	(well obstruction at approx. 32'-4")	
48	33'-3"	#5 House Electric - Cyc Lights	6) 20A circuits, double batten	
49	33'-11"	Empty		
50	34'-7"	Empty		
51	35'-3"	Empty		
52	35'-10"	Empty		
53	36'-8"	Black Sharkstooth Scrim	35'H x 65'W, 75 lbs.	
54	37'-3"	Blue Cyclorama	35'H x 65'W, 250 lbs.	
55	38'-1"	Full-Stage Blackout Drop	40'H x 70'W, two panels, 550 lbs. total	
56	38'-9"	Empty	(well obstruction at approx. 37'-8")	
57	39'-4"	Empty		
58	40'-0"	Empty		
59	40'-7"	Empty		
60	41'-3"	Empty		
61	41'-10"	Empty		
62	42'-5"	Picture Screen Storage	11' 6" x 15' dual vision surface front & RP screen.	
63	43'-1"	Empty	(well obstruction at approx. 43'-0")	
64	44'-1"	Shell Storage (Not available for use)		(Not available for use)
65	45'-5"	Shell Storage (Not available for use)		(Not available for use)
66	46'-9"	Shell Storage (Not available for use)		(Not available for use)

NOTES:

- Due to campus fire regulations, the Grand Valance/Fire Curtain on Line-set #1 *must* be respected at all times. *NOTHING* may block the Valance's free travel to the stage. The Grand Valance/Fire Curtain may be used as a guillotined act curtain if desired, but its balance may not be altered—it is pipe-heavy, and *must* remain so at all times. It does not have a center split.
- The Grand Traveler is manual operation. May be used as a guillotine, or as an Act curtain.
- High trim on all pipes is approx. 71'. Lowest (working) trim is approx. 4'.
- Pipes 2-4 cannot be kicked, although they may be diverted.
- Due to the width of the overhung loft blocks, pipes 6-62 can generally only be kicked 2-3" without gang-kicking or diverting. There are some instances of obstructions in the structural steel preventing any kicking of certain linesets in certain directions (grid hangers, for example).
- Pipes #6, 19, and 32 are used for our orchestra shell ceilings. The ceilings may be stripped as needed, given advance notice.
- Pipes 64-66 are orchestra ceiling storage pipes, and are not generally available for any other use.
- House electric pipes (Line-sets #3, 14, 27, 37, and 48) are double-batten pipes. All house electric works, e.g. feeder mults, fan-outs, worklights, etc. may be stripped as needed.

- The grid is over-hung, 2"x3" C-channel with 10" wells on 10' centers, and is fully riggable. We stock a fair quantity of 3' long, 1.5"ID Sched. 40 pipe and 2" thick-wall box tube for piping points on the grid, and can hang up to a 1-ton point pretty much anywhere. Two-ton (and heavier) points may be hung from well channels, heavy spanner beams, or the high steel *only*.
- Well obstructions noted consist of steel diaphragms and/or grid hangers crossing the wells, except for the raceway at 20'-3".
- There are two (2) locking rails, both SL. One is at stage level, the other is on the SL pinrail, approx. 17' off the deck. Either one may be used for running the show, as your needs dictate. There is also an elevated pinrail SR, approx. 27' off the deck. Most picklines (especially electric's picks) are led to this side, although they may be led to either side as needs dictate.
- We stock a quantity of spotting sheaves and 3/4" multi-line on the grid for installing spotlines. They may be spotted anywhere on the grid as needs dictate.
- There are six (6) fixed rigging dead-eye positions in the first house cove, approx. 5' downstage of the plasterline, for hanging lighting or sound trusses DS of the proscenium. They are located at approx. 7'-6", 21'-6", and 29'-3" from CL, both SL and SR (mirrored points), can safely hold up to one ton each, and are clear of obstructions to approx. 30' off the deck. Hanging points from any other location downstage of the proscenium will be considered on a case-by-case basis.

Directions to Loading Docks

GPS Directions to Stage Door/Loading Docks ONLY

(DO NOT USE THIS ADDRESS FOR SHIPPING!!!)

755 Wilson Road

Michigan State University

East Lansing, Michigan 48824-1318

TO EAST LANSING:

FROM NORTH/SOUTH: US 127 to Trowbridge Rd exit.

FROM WEST: I-96/69 to I-496 to Trowbridge Rd exit.

FROM NORTHEAST: I-69 to US 127 South to Trowbridge Rd exit.

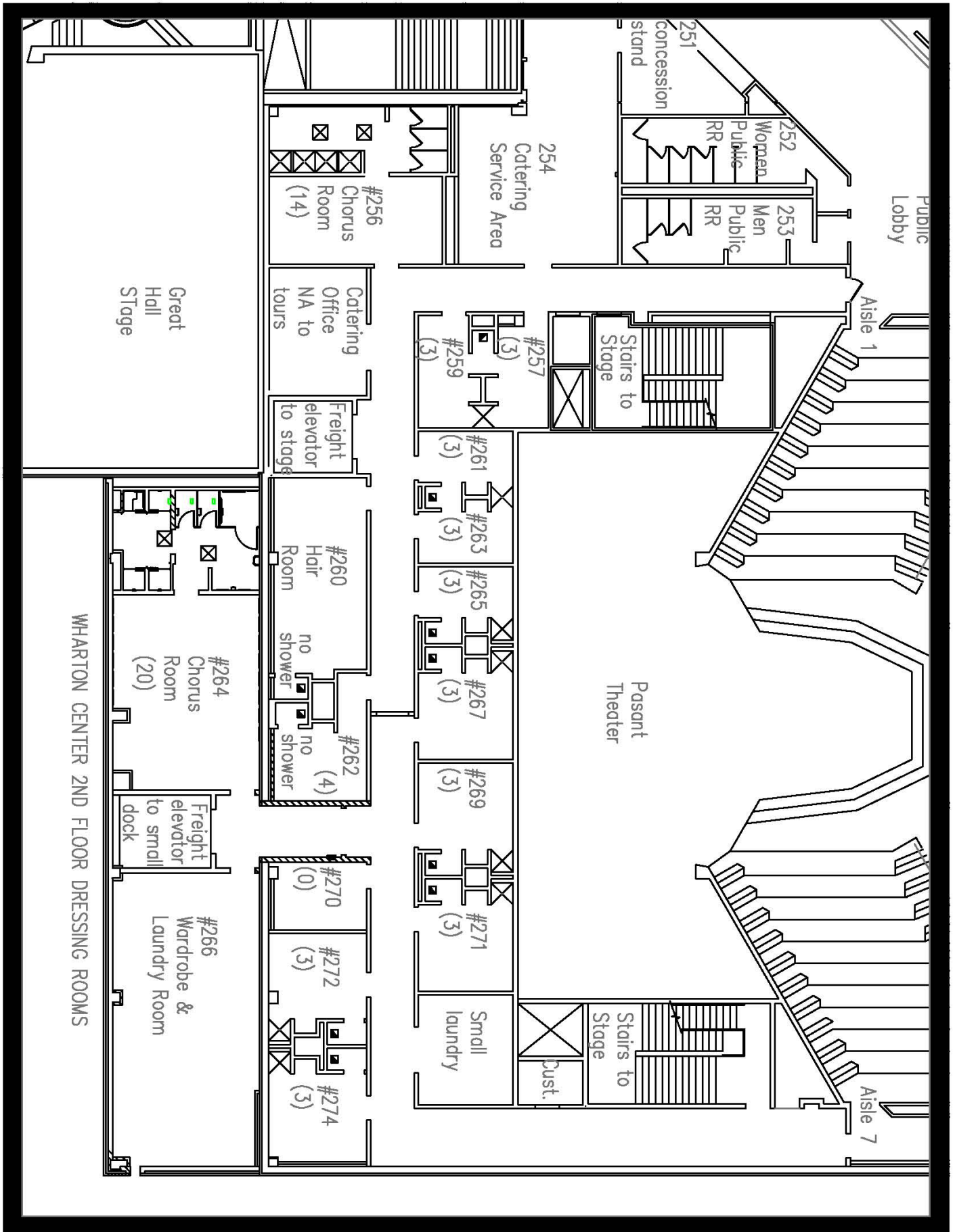
FROM SOUTHEAST: I-96 to US 127 North to Trowbridge Rd. exit

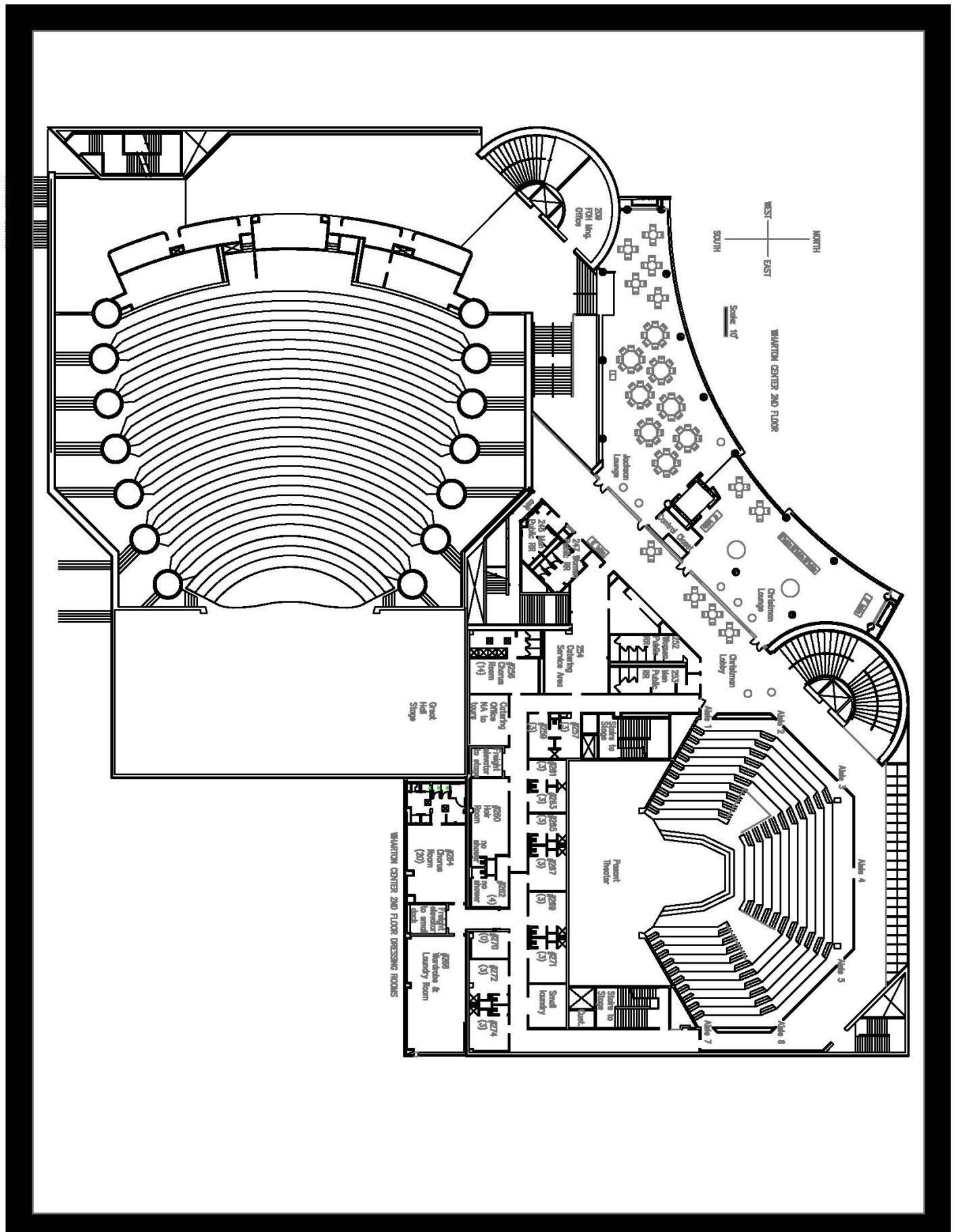
TO WHARTON CENTER:

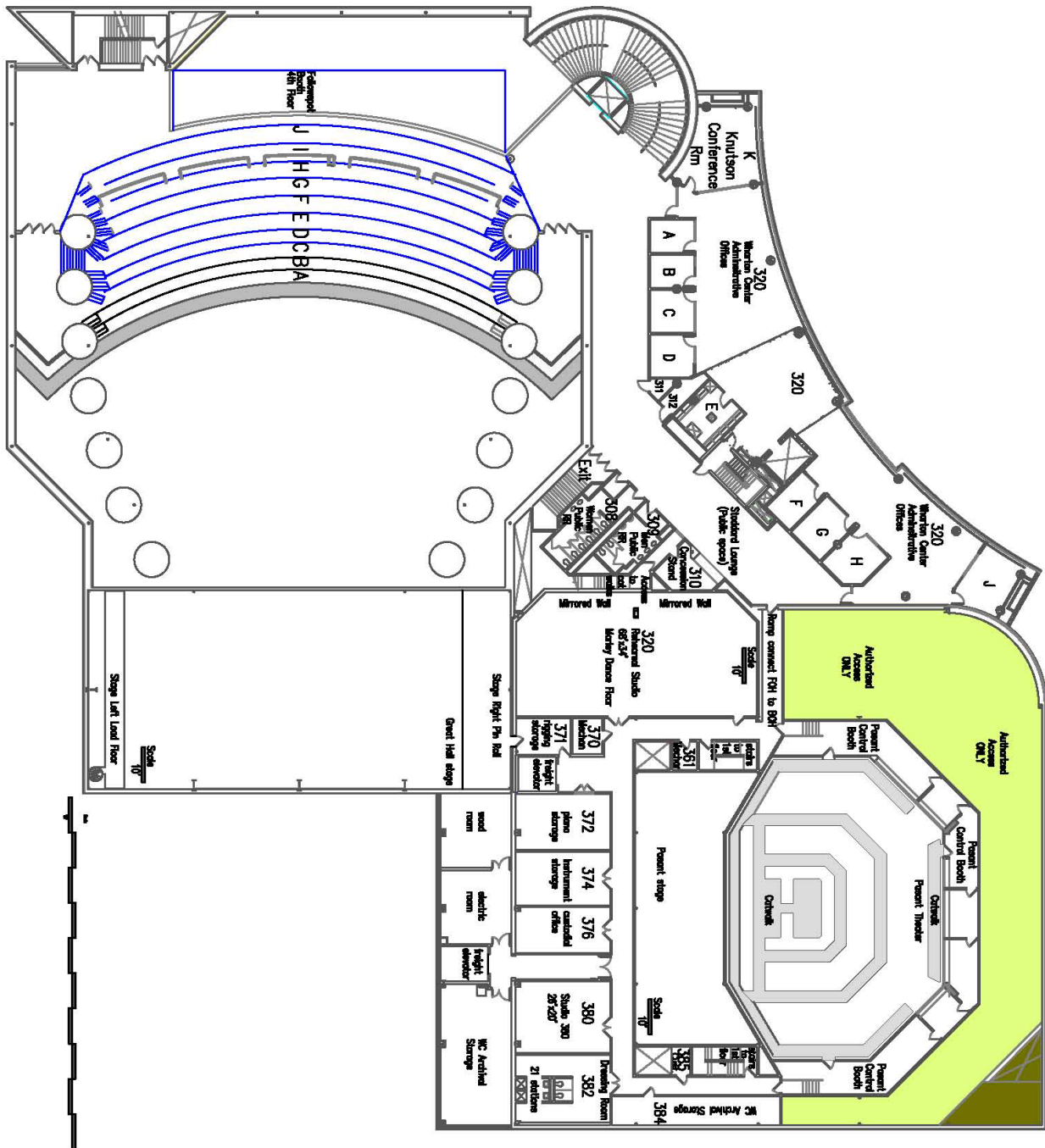
FROM TROWBRIDGE RD EXIT: Take Trowbridge Rd straight onto MSU Campus; [you will be driving east] follow curve left onto Red Cedar; [you will be driving north] Turn right onto Wilson Road; you will be driving east] Continue on to light at Bogue St. Go through light at Bogue Street, loading dock entrance is first drive on the left.

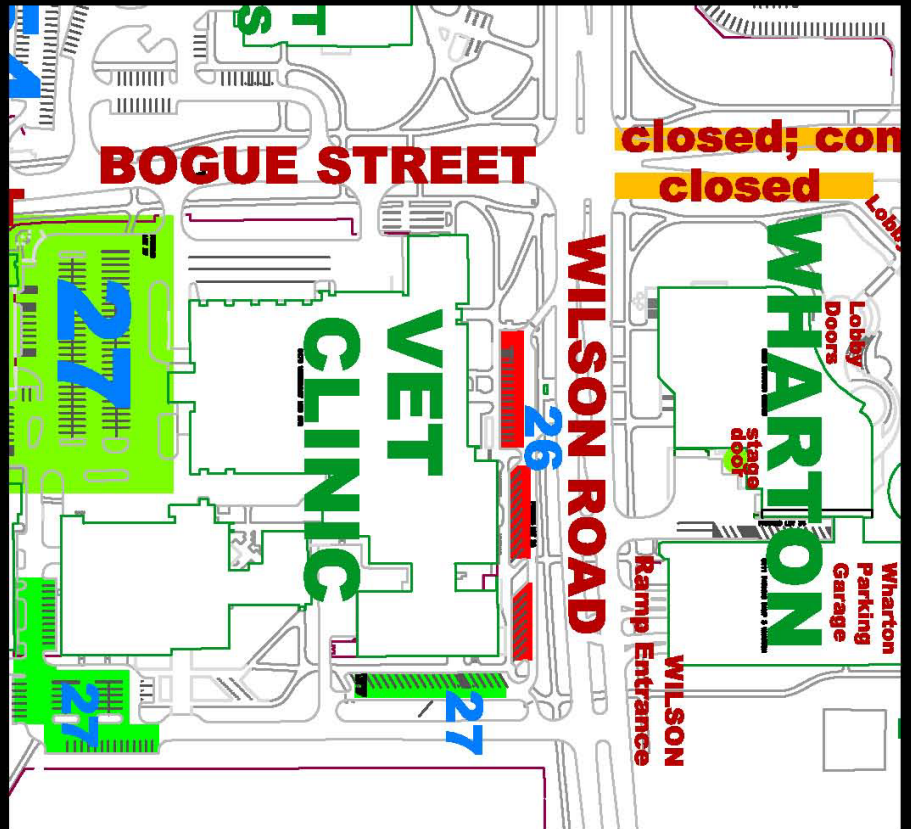
Wharton Center loading dock access is located on the corner of Bogue and Wilson Street on the MSU campus.











Wharton Event Staff Parking:
 Monday-Friday **AFTER 6 P.M. ONLY** & Saturday, Sunday all day:
 you may park in lot #27 without a guest parking permit.
 Spaces are not reserved, nor guaranteed.
 Guest Permits are available for
 \$3 = 4 hours, \$6 = 24 hours, available daily from WC Stg. Mng.
 \$10.25 for the week purchase in advance
 Guest Parking Permits are good for parking garage.
 Enter Shaw Lane Entrance. Show permit when exiting.
 No overnight parking on campus without prior arrangements.
DO NOT PARK IN LOT 26 (marked in red.)
 Please do not argue with the parking enforcement officer.

